

State of Wyoming Corner Record

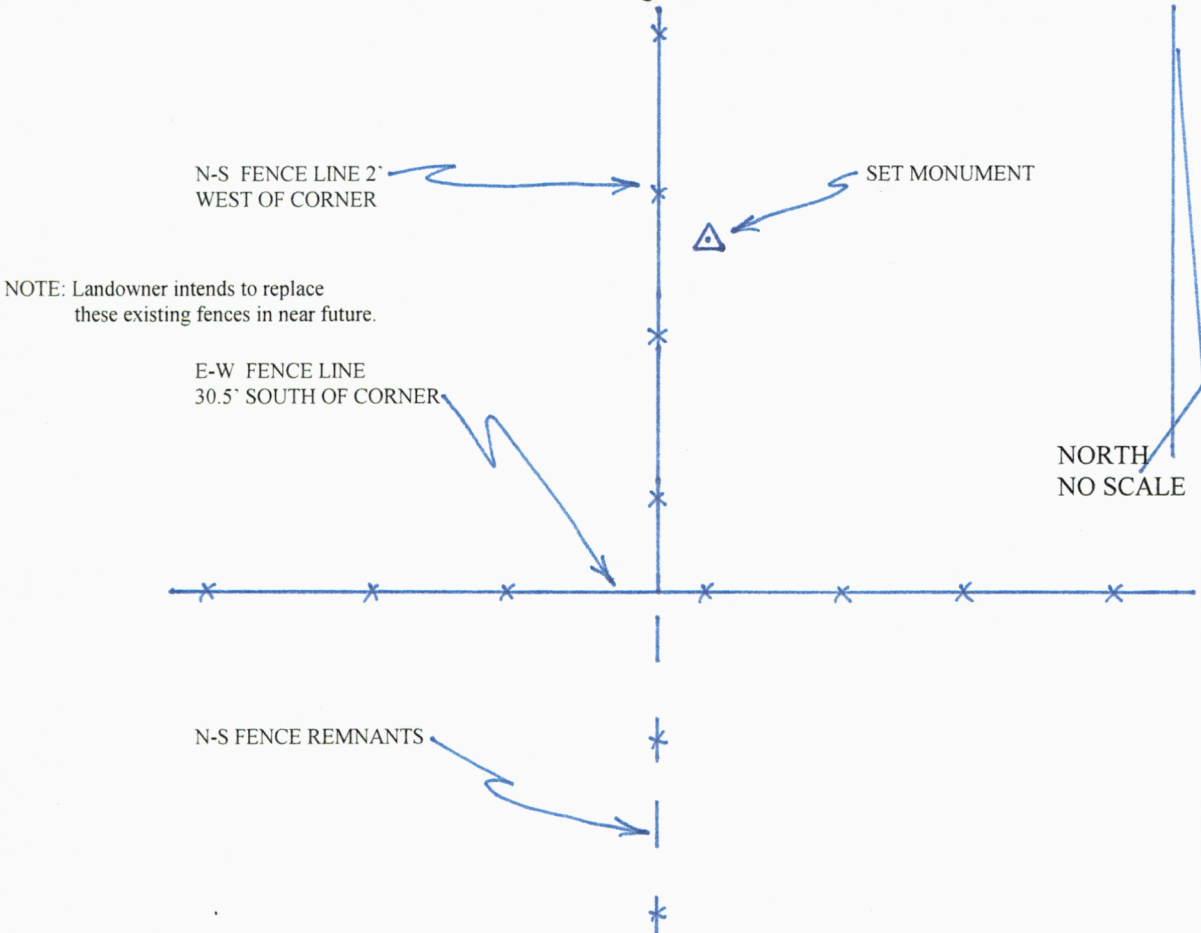
(In compliance with the *CORNER PERPETUATION AND FILING ACT*, Wyoming Statutes, 1997, Section 33-29-140, et seq., and the Rules and Regulations of the Board of Registration for Professional Engineers and Professional Land Surveyors)

Reverse side of this form may be used if more space is needed.

Record of original survey and citation of source of historical information (if corner is lost or obliterated). Description of corner monumentation evidence found and/or monument and accessories established to perpetuate the location of this corner. Sketch of relative location of monument, accessories, and reference points with course and distance to adjacent corner(s) (if determined in this survey). Method and rationale for reestablishment of lost or obliterated corner.

Quarter Corner: 8/17 T14N, R61W, 6th PM, Laramie County, Wyoming.
 GLO record: 14"x10"x4" Lime Stone marked ¼.
 Found: Nothing found. Completed extensive search and ground probing with no success.
 Set: 30" No.5 rebar w/2 ½" dia. Aluminum Survey Cap, stamped PLS 4828 and proper identification.

This corner was reestablished online, midway between the reestablished corners for the NW (found stone – remonumented) and NE Corners of said Section 17. Monument stands 2" out of the ground.



SEE MAP ON BACK OF THIS PAGE FOR DISTANCE TIES TO SURROUNDING CORNERS.

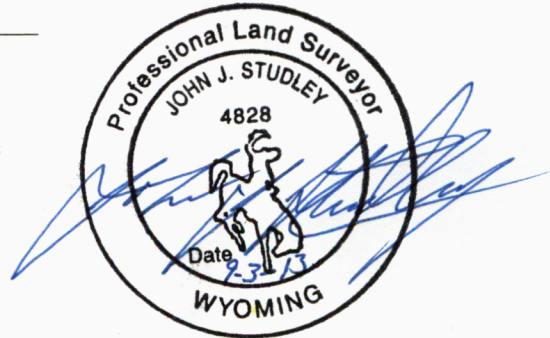
Date of Field Work: SEPT. 2013 Office Reference: _____

CROSS INDEX DIAGRAM

1	2	3	4	5	6	7	8	9	10	11	12	13	14	15	16	17	18	19	20	21	22	23	24	25		
A																									A	
B																									B	
C		6		5		4		3		2		1													C	
D																										D
E																										E
F																										F
G			7		8		9		10		11		12													G
H																										H
J																										J
K																										K
L			18		17		16		15		14		13													L
M																										M
N																										N
O																										O
P			19		20		21		22		23		24													P
Q																										Q
R																										R
S																										S
T			30		29		28		27		26		25													T
U																										U
V																										V
W																										W
X			31		32		33		34		35		36													X
Y																										Y
Z																										Z
1	2	3	4	5	6	7	8	9	10	11	12	13	14	15	16	17	18	19	20	21	22	23	24	25		

Land Surveyor / Firm / Address
Studley Land Surveying, PC
John J. Studley, PLS No. 4828
615 West Dale Blvd.
Cheyenne, WY 82009
 Telephone: 307-287-4755

This corner record was prepared by me or under my direction and supervision.
 SEAL & SIGNATURE



Corner Name: Quarter Corner common to Sections: 8 & 17 T 14 N R 61 W : 6th P.M. Cross-Index No.: J-7
 SBRPEPLS/PLSW: March 1994; PLSW January 1998

N.W. COR.
SEC. 17
LS 519

2640' (R)
2646.44' (M)

N. ¼ COR.

2640' (R)
2646.44' (M)

N.E. COR.
SEC. 17
LS 6097

SECTION 17
T.14N., R.61W., 6TH P.M.
LARAMIE COUNTY, WYOMING

S.W. COR.
SEC. 17
LS 2500

2643.78' (M)
2640' (R)

S. ¼ COR.

2643.78' (M)
2640' (R)

S.E. COR.
SEC. 17
LS 2500

